

**So what is the
bottom line?**



Currently Grant County CSZD does not have the funds to require all the landowners in Grant County to develop and follow a nutrient management plan (NMP). So if you do not fall into one of the 4 categories listed in this brochure, you are not required to develop a plan at this time.

Although not required for all, a NMP would be a useful tool for efficiently managing your nutrients in your farming operation. Especially during tough economic times, utilizing everything you have to the best of its ability will benefit your operation.

If you are interested in learning more about developing a nutrient management plan or have questions regarding the need for a plan on your operation, please contact us at the Conservation Office.



**Grant County Conservation, San-
itation and Zoning Dept**

150 W Alona Ln
Lancaster, WI 53813
Phone: 608-723-6377 #4

Do I need a Nutrient Management Plan?



Technically, Yes

According to NR 151.07(1), (3), (6): All crop and livestock producers that apply manure or other nutrients directly or through contract to agricultural fields shall apply manure, commercial fertilizer and other nutrients in conformance with a nutrient management plan by January 1, 2008.

However,

In most cases the Grant County Conservation, Sanitation and Zoning Department (CSZD) can not require you to develop a nutrient management plan unless we have cost sharing funds to offer 70% cost sharing (\$28/Acre).

At this time, county wide funding is not available.

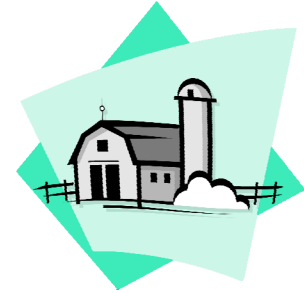


When would a Nutrient Management Plan be required without the offer of cost sharing?

1.) **When you are installing an animal waste storage facility through the Grant County Ordinance (Ch. 37).** A nutrient management plan (NMP) is a required component to apply for an animal waste storage permit; therefore, an offer of cost sharing is not required.



2.) **When you receive state (Soil and Water Resource Management Grant) cost sharing to install an animal waste storage facility.** To be eligible to receive state funding to install a storage facility, you are required to develop and follow a NMP without the offer of cost sharing.



3.) **When you are participating in the Farmland Preservation Program (FPP).** Participants in the FPP program are required by state statute to comply with all of the Statewide Performance Standards to receive a tax credit. This tax credit is considered your offer of cost sharing.

Over the next 5 years, we will be spot checking each participant in the program. At the time of your spot check, you will be asked to develop and follow a NMP in order to stay in the program and continue taking the tax credit.

4.) **When your animal numbers exceed 1000 animal units.** The State of Wisconsin requires a NMP to be developed with the application of a Wisconsin Pollutant Discharge Elimination System Permit. This is required when your animal units exceed 1000.