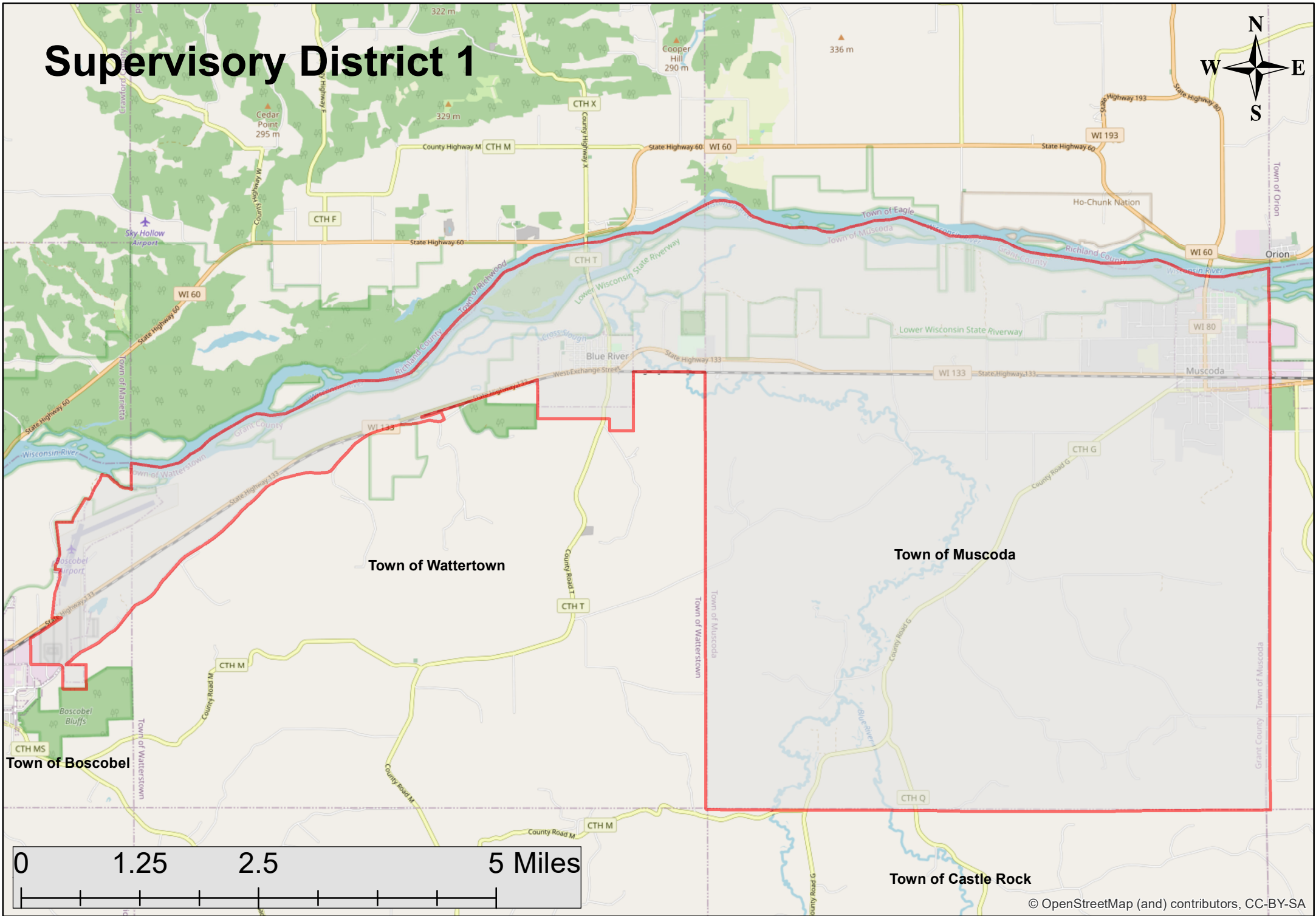


A detailed map of Supervisory District 1 in Wisconsin. The district boundary is highlighted in red. It covers parts of several towns: Wattertown to the west, Muscodia to the east, Boscobel to the southwest, and Castle Rock to the south. Major roads shown include State Highway 60 (WI 60), State Highway 133 (WI 133), and County Highways M, T, X, F, G, Q, and MS. Water features include the Lower Wisconsin State Riverway, Blue River, Cross Slough, and various creeks like Wolf Creek and Mud Creek. Landmarks such as Cedar Point (295 m), Cooper Hill (290 m), and Sky Hollow Airport are noted. A compass rose indicates North, and a scale bar shows distances up to 5 miles. The map also shows neighboring towns like Orion, Muscodia, and Castle Rock, as well as Grant County and Richland County.

[illegible]

A detailed map of Supervisory District 1 in Wisconsin. The district boundary is highlighted in red. It includes the Towns of Wattertown, Muscodia, Boscobel, Castle Rock, and Orion. Major roads shown include State Highway 60, State Highway 133, County Highway M, CTH F, CTH T, CTH X, CTH G, CTH Q, CTH MS, and County Road G. Water bodies like the Wisconsin River, Blue River, and Cross Slough are depicted. Landmarks such as Sky Hollow Airport, Boscobel Airport, Cedar Point, and Cooper Hill are marked with elevations. A compass rose indicates North, and a scale bar shows distances up to 5 miles. The map also labels various counties like Grant, Richland, and Ho-Chunk Nation.