



## You were exposed to COVID-19. Quarantine if:

- You are **not fully vaccinated**. This means you are not vaccinated against COVID-19 or it has been less than 14 days since you received the Johnson & Johnson vaccine or the last dose in your primary series of Pfizer or Moderna.
- You are **not up to date with your COVID-19 vaccines**. This means:
  - You received your second dose of Pfizer or Moderna vaccine **over 5 months ago** and have not yet received a booster dose
  - You received a Johnson & Johnson vaccine **over 2 months ago** and have not yet received a booster dose.

**Quarantine for at least 5 days, monitor for symptoms, and wear a well-fitting mask around other people for an additional 5 days after quarantine.**

Unless you have tested positive for COVID-19 in the last 90 days, **get tested for COVID-19 at least 5 days after exposure.**



**\*If you test positive or develop symptoms of COVID-19, isolate immediately. See instructions for isolation at: [www.dhs.wisconsin.gov/covid-19/diagnosed.htm](http://www.dhs.wisconsin.gov/covid-19/diagnosed.htm)**

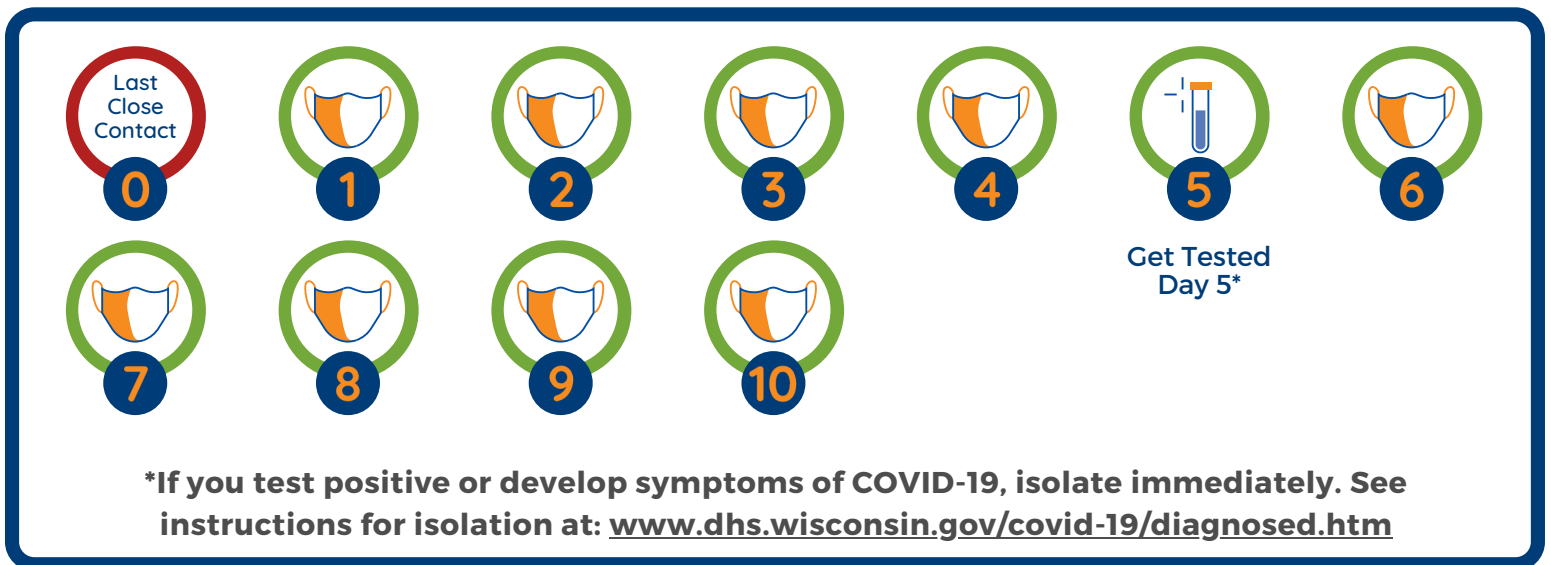
- If someone in your household has symptoms or tests positive for COVID-19 and you are not able to completely isolate from them, **quarantine while that person is in isolation and for 5 additional days starting the day after the person with COVID-19 ends their isolation period.**
- If you are not able to quarantine, you must **wear a well-fitting mask at all times** when around other people for **10 days** after last close contact.



## You were exposed to COVID-19. You do NOT need to quarantine if:

- You tested positive for COVID-19 **less than 90 days ago** with a viral test.
- You are **up to date with your COVID-19 vaccines**, this means:
  - You received your second dose of Pfizer or Moderna vaccine less than 5 months, **or**
  - You received your Johnson and Johnson vaccine less the 2 months ago, **or**
  - You have received a COVID-19 booster dose.

**Get tested at least 5 days after exposure** (unless you have tested positive for COVID-19 in the last 90 days) and **wear a well-fitting mask around other people for 10 days** following exposure. Avoid traveling and locations where you cannot consistently wear a mask, such as a restaurant.



For more information on quarantine, visit:  
[www.dhs.wisconsin.gov/close-contacts.htm](http://www.dhs.wisconsin.gov/close-contacts.htm).