

The Lancaster hospital has 35 beds, Boscobel has 36 beds and Southwest Health Center in Platteville has 49 beds. They are rural hospitals that serve our entire county. Three clinics involved have six (6) or more doctors. The remaining eleven (11) have one to two doctors available. The clinics were well spaced throughout the county.

In this year's research only the information on the forms were used. There were no follow-up interviews. At some point in the future there may be special interests in other areas, such as cost/effect. This could then be pursued through additional contact with the hospital or clinic and the injured person and family.

We will be conducting this research again next year for seven (7) months. A comparison will be made using the two years data.

## FINDINGS

There were 136 farm related injuries from April 20 through November 15, 1987. There were no deaths. The severity of the injuries ranged from bruises, cuts and puncture wounds to amputation as the severest.

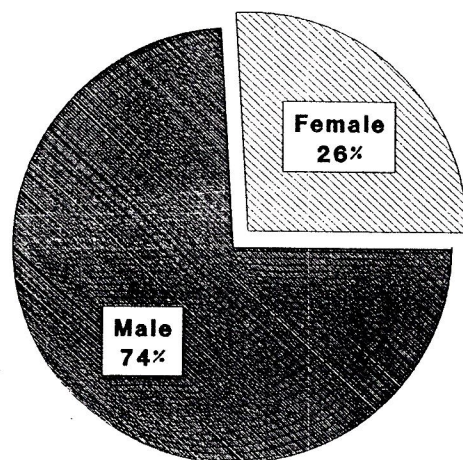
Twenty-six (26) percent of the injuries involved females versus seventy-four (74) percent males. Thirty-five (35) percent of the injuries occurred in the month of June. June 22nd through 28th had fourteen (14) injuries, the most for any week in this research period. Most injuries occurred between the hours of 5:00PM to 8:00PM. The age span was from two (2) years old to seventy-three (73).

The type of accident reported most often involved farm machinery. The next most frequent involved an animal. Thirty-nine and one half percent (39½%) of the injuries occurred to the upper extremities.

The table and graphs that follow give specific figures and percentages for the findings of this research.

---

# **Farm Injuries in Grant County** **Sex of Patients** **N = 131**



**Sex**

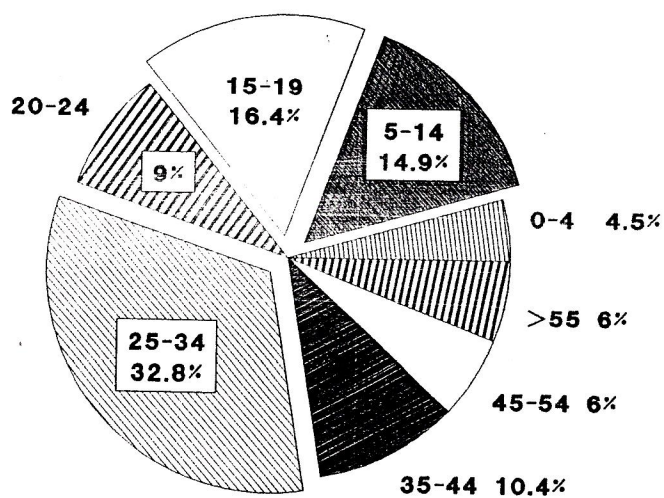
# **Farm Injuries in Grant County** **Age of Patients** **N = 134**

AGE

N = 136\*

\*2 not reported

0- 4 years	=	6
5-14 years	=	20
15-19 years	=	22
20-24 years	=	12
25-34 years	=	44
35-44 years	=	14
45-54 years	=	8
55-64 years	=	6
66 & over	=	2

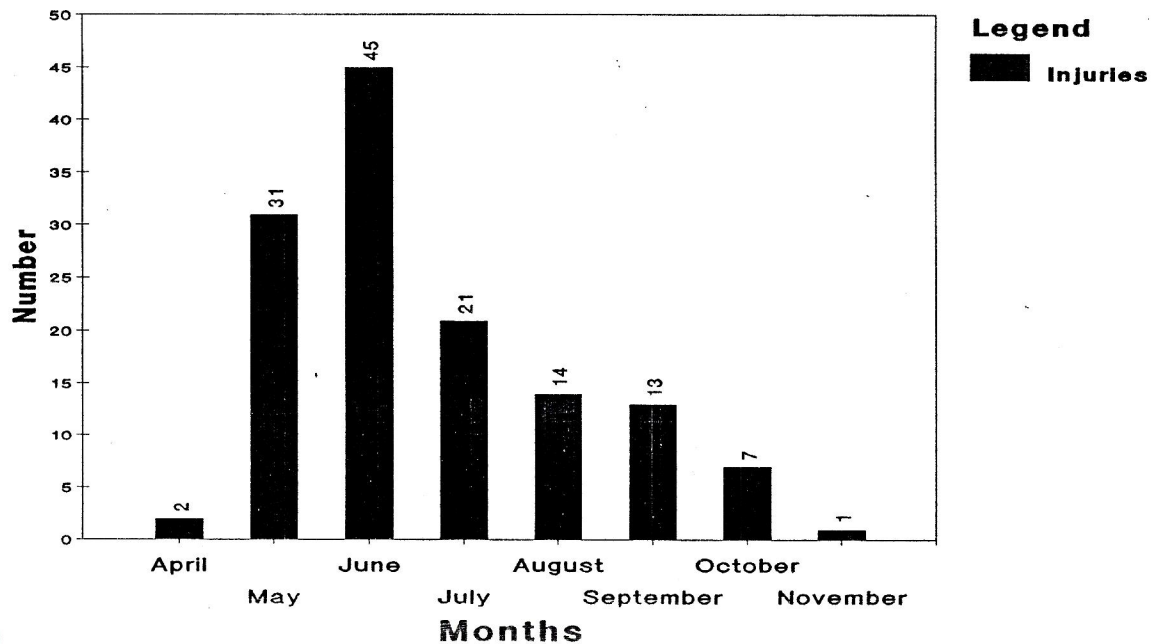


**Age in Years**

# Farm Injuries in Grant County

April - November, 1987

N=134



## Site of Injury

N = 140

\*8 injuries involved multiple body parts  
\*4 not reported

### Upper Extremity

Arm - 15  
Hand - 14  
Fingers - 18  
Wrist - 4  
Shoulder - 3  
Elbow - 1

### Head

Head - 9  
Face - 6  
Neck - 1  
Eye - 8  
Ear - 1

### Trunk

Chest - 7  
Lungs - 1  
Vagina - 1  
Ribs - 1  
Back - 4  
Hip - 3  
Buttocks - 1

### Lower Extremity

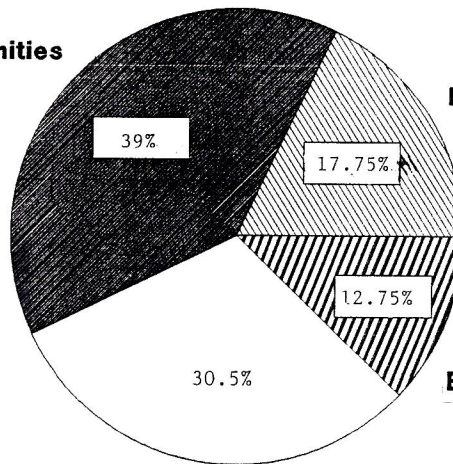
Leg - 14  
Ankle - 5  
Toes - 6  
Knee - 5  
Foot - 13

## Farm Injuries in Grant County

Body Part Injured\*

N = 136

Upper Extremities



Lower Extremities

Body Part

\* Includes multiple injuries

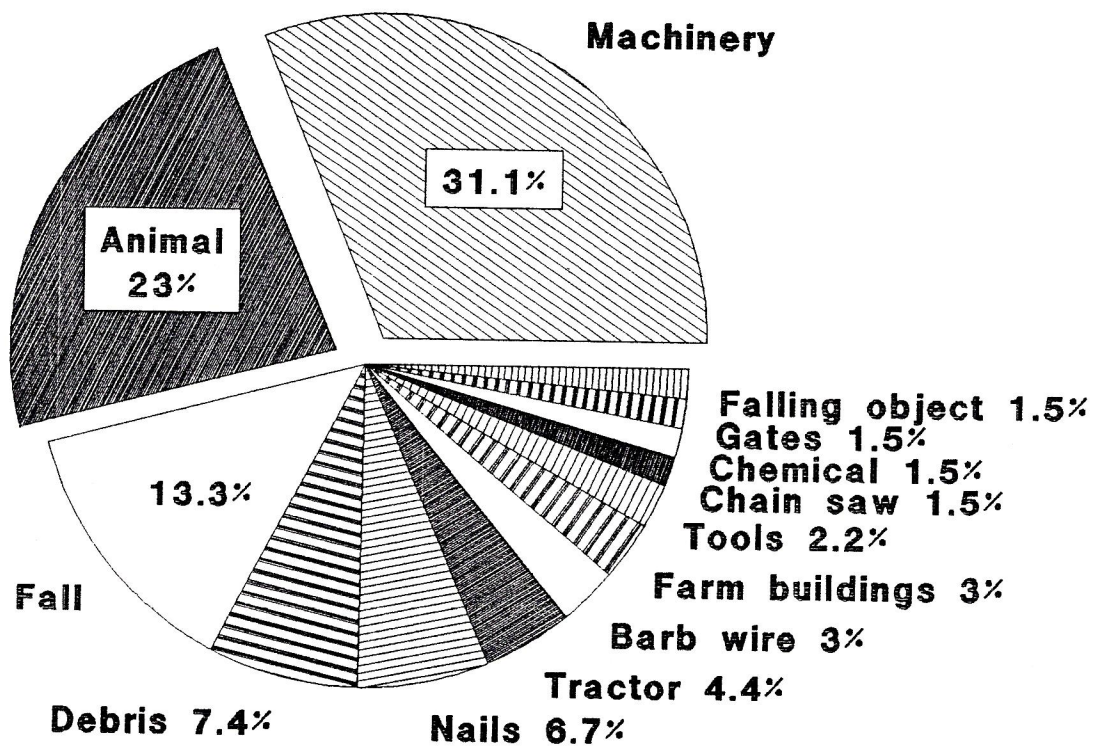


# Grant County Farm Injuries

April - November, 1987

Causative Agent

N = 135



Agent

Type of Accident

N=136 \*1 not reported

Barbwire	= 4	Tractor	= 6	Hand Tool	= 3
Debris	= 10	Machinery	= 42	Gate	= 2
Chemical	= 2	Animal	= 31	Falling/	
Nails	= 9	Fall	= 18	Object	= 2
Farm Building=	4	Chain Saw	= 2		